

# Tuner4TRONIC™ 2.4.0

## Win8 DALI magic utility

VIII 2015

(2015-08-26)

**Please note:**

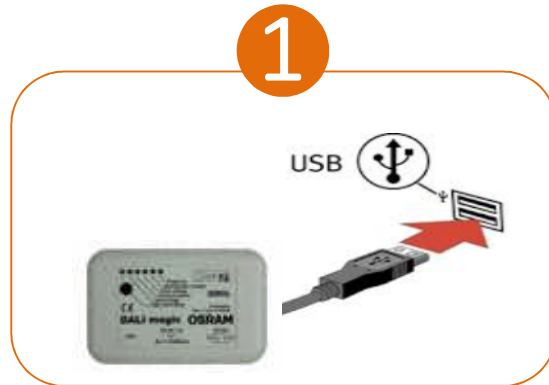
All information in this guide has been prepared with great care. OSRAM, however, does not accept liability for possible errors, changes and/or omissions. Please check [www.osram.com](http://www.osram.com) or contact your sales partner for an updated copy of this guide. This technical application guide is for information purposes only and aims to support you in tackling the challenges and taking full advantage of all opportunities the technology has to offer. Please note that this guide is based on own measurements, tests, specific parameters and assumptions. Individual applications may not be covered and need different handling. Responsibility and testing obligations remain with the luminaire manufacturer/OEM/application planner.



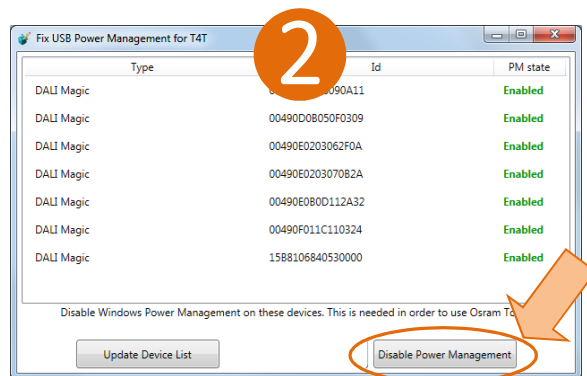
## Tuner4TRONIC 2.4.0 – Win8 DALI magic utility

When using Windows 8.1, in order to avoid the auto-disconnection of the DALI magic programming interfaces (which might enter the stand-by mode), it is necessary to use the “Win8 DALI magic utility”.

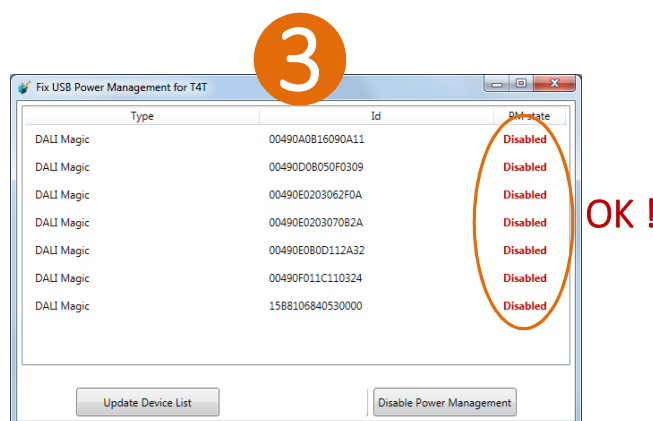
This SW has to be run with administrator rights (right click on it → Run as Administrator).



1. Before running the SW, connect one after the other all available DALI magic programming interfaces to the USB port of the PC, wait till Windows 8.1 terminates the installation of the related driver.



2. Click “Disable Power Management”



3. Completed! All DALI magic programming interfaces are now ready to be used.  
Repeat the sequence 1 - 2 - 3 in each PC running Windows® 8.1 and also every time a new DALI magic interface is used.